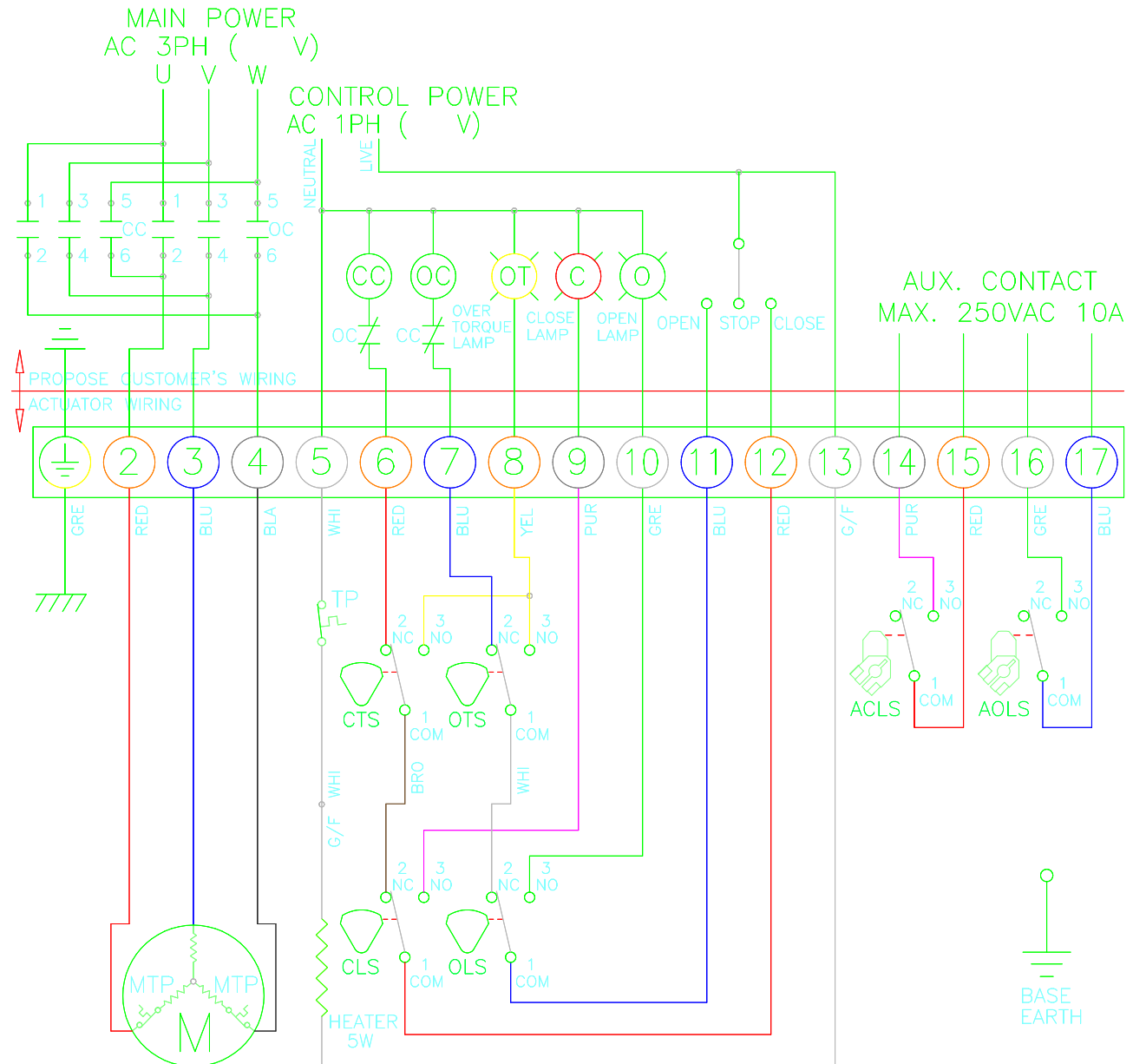


CLS : CLOSE LIMIT SWITCH (250VAC 10A)  
 OLS : OPEN LIMIT SWITCH (250VAC 10A)  
 CTS : CLOSE TORQUE SWITCH (250VAC 10A)  
 OTS : OPEN TORQUE SWITCH (250VAC 10A)  
 ACLS : AUX. CLOSE LIMIT SWITCH (250VAC 10A)  
 AOLS : AUX. OPEN LIMIT SWITCH (250VAC 10A)  
 CC : CLOSE MAGNETIC COIL  
 OC : OPEN MAGNETIC COIL  
 TP : THERMAL PROTECTOR (250VAC 15A OPTION)

\*EACH ACTUATOR SHOULD BE POWERED THROUGH ITS OWN INDIVIDUAL SWITCH OR RELAY CONTACTS TO PREVENT CROSS FEED BETWEEN TWO OR MORE ACTUATORS.

TORQUE AND LIMIT SWITCHES OPERATION

SWITCH	CLOSE ←	INTERMEDIATE	→ OPEN
CLS 1-2			
CLS 1-3			
OLS 1-2			
OLS 1-3			
ACLS1-2			
ACLS1-3			
AOLS1-2			
AOLS1-3			
CTS 1-3	* CLOSING TORQUE SWITCH INTERRUPTS CONTROL IF MECHANICAL OVERLOAD OCCURS DURING CLOSING CYCLE		
OTS 1-3	* OPENING TORQUE SWITCH INTERRUPTS CONTROL IF MECHANICAL OVERLOAD OCCURS DURING OPENING CYCLE		



 www.pikevalves.com		DRAWN	DESIGN	CHECKED	APPROVER
		C.J.	C.J.		
PART NAME		ISSU. DEPT.	DATE	SIZE	PROGRAM
3PH WIRING DIAGRAM		ITCDR	2003.10.15	A4	AUTO CAD
OPTION NAME		DWG NO			
ALS		PE-W-OC-3-LS_0120-0175			
APP'L,FILE					