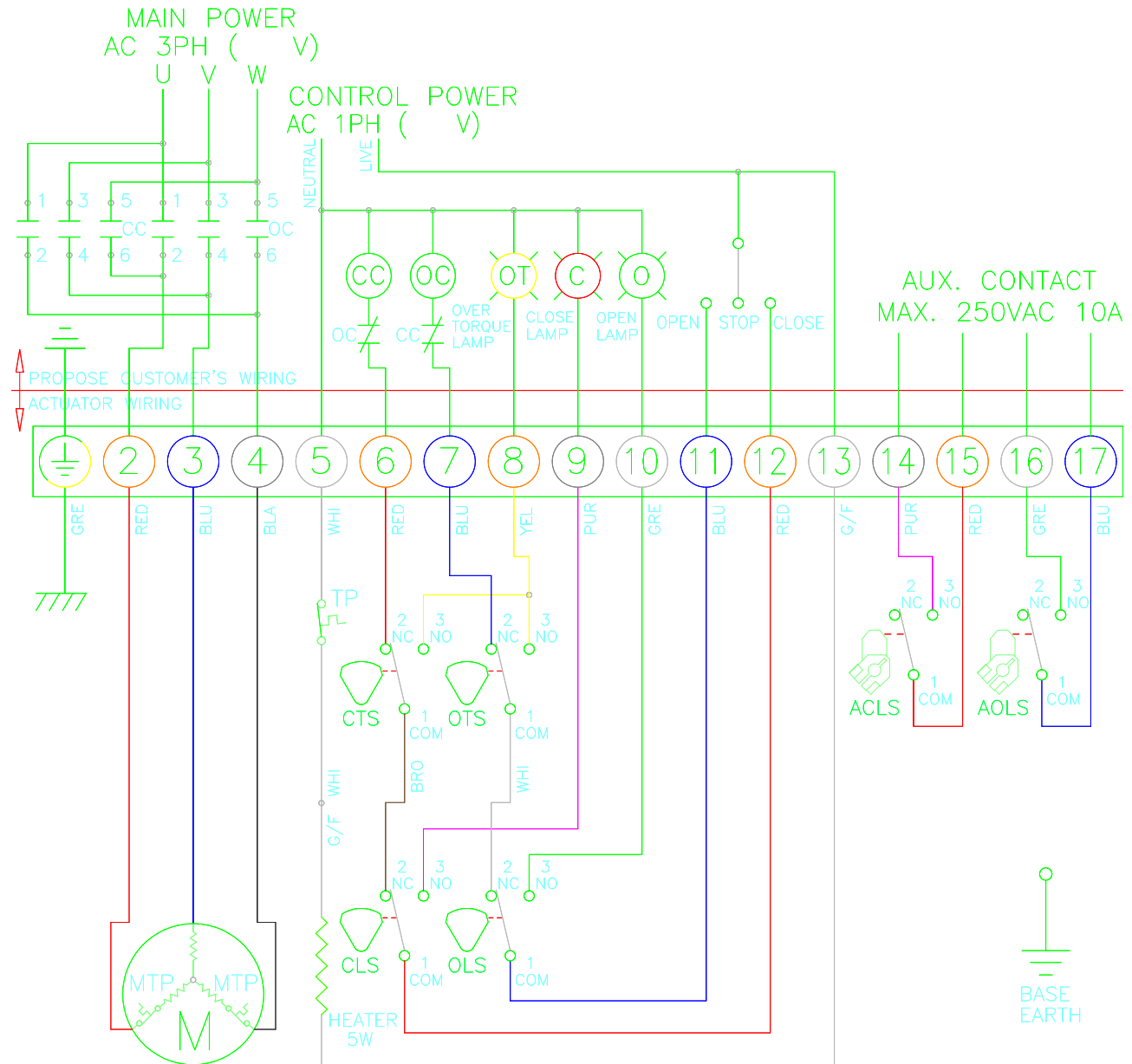


CLS : CLOSE LIMIT SWITCH (250VAC 10A)  
 OLS : OPEN LIMIT SWITCH (250VAC 10A)  
 CTS : CLOSE TORQUE SWITCH (250VAC 10A)  
 OTS : OPEN TORQUE SWITCH (250VAC 10A)  
 ACLS : AUX. CLOSE LIMIT SWITCH (250VAC 10A)  
 AOLS : AUX. OPEN LIMIT SWITCH (250VAC 10A)  
 CC : CLOSE MAGNETIC COIL  
 OC : OPEN MAGNETIC COIL  
 TP : THERMAL PROTECTOR (250VAC 15A OPTION)  
 \*EACH ACTUATOR SHOULD BE POWERED THROUGH ITS OWN INDIVIDUAL SWITCH OR RELAY CONTACTS TO PREVENT CROSS FEED BETWEEN TWO OR MORE ACTUATORS.

TORQUE AND LIMIT SWITCHES OPERATION			
SWITCH	CLOSE ←	INTERMEDIATE	→ OPEN
CLS 1-2			
CLS 1-3			
OLS 1-2			
OLS 1-3			
ACLS1-2			
ACLS1-3			
AOLS1-2			
AOLS1-3			
CTS 1-3	* CLOSING TORQUE SWITCH INTERRUPTS CONTROL IF MECHANICAL OVERLOAD OCCURS DURING CLOSING CYCLE		
OTS 1-3	* OPENING TORQUE SWITCH INTERRUPTS CONTROL IF MECHANICAL OVERLOAD OCCURS DURING OPENING CYCLE		



	 <a href="http://www.pikevalves.com">www.pikevalves.com</a>	DRAWN	DESIGN	CHECKED	APPROVER
		C.J.	C.J.		
	PART NAME	ISSU. DEPT.	DATE	SIZE	PROGRAM
	3PH WIRING DIAGRAM	ITCDR	2003.10.15	A4	AUTO CAD
	OPTION NAME	DWG NO			
APP'L, FILE	ALS	PE-W-OC-3-LS_0590-0810			