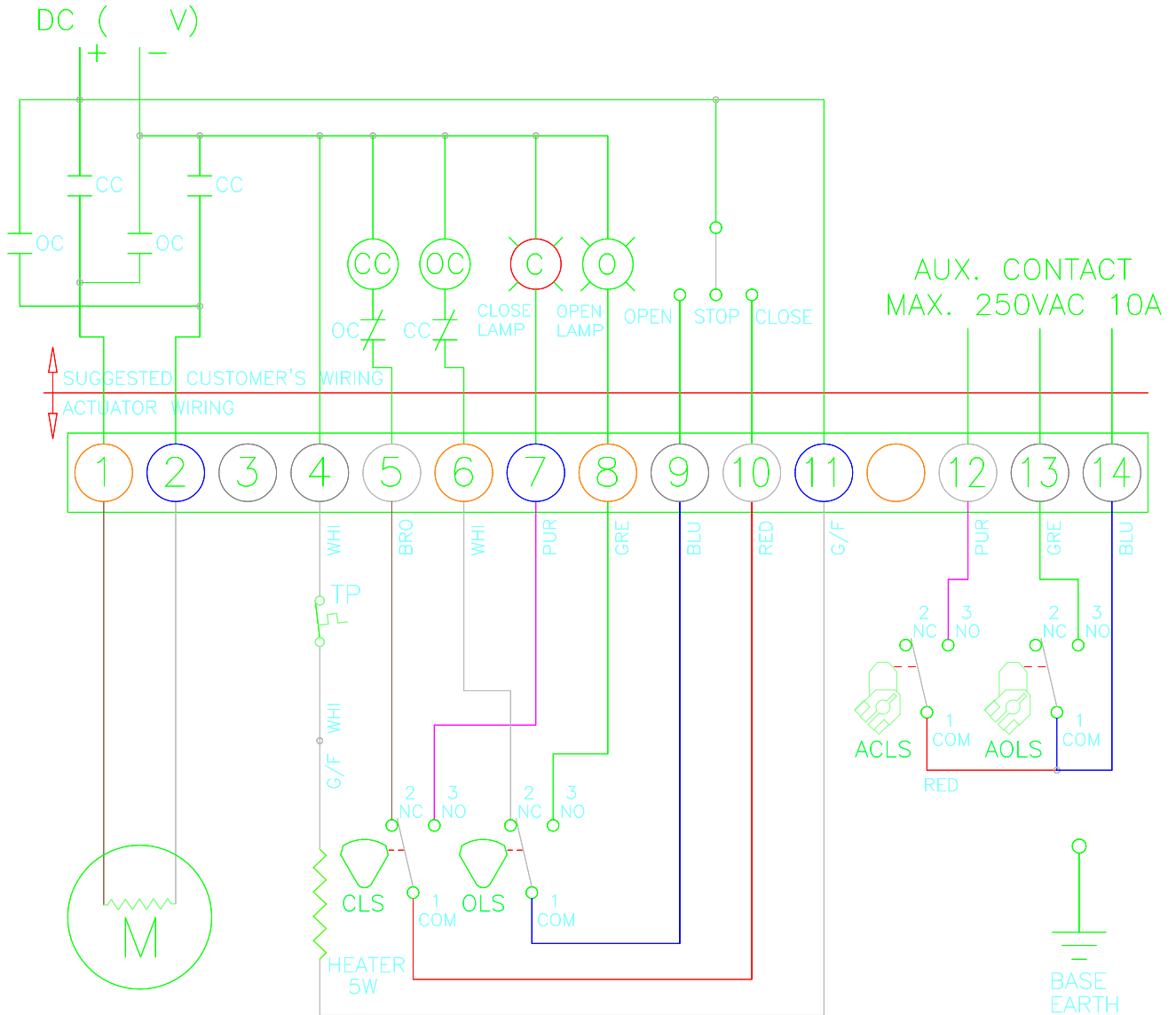


CLS : CLOSE LIMIT SWITCH (250VAC 10A)
 OLS : OPEN LIMIT SWITCH (250VAC 10A)
 ACLS : AUX. CLOSE LIMIT SWITCH (250VAC 10A)
 AOLS : AUX. OPEN LIMIT SWITCH (250VAC 10A)
 CC : CLOSE MAGNETIC COIL
 OC : OPEN MAGNETIC COIL
 TP : THERMAL PROTECTOR (250VAC 15A OPTION)
 *EACH ACTUATOR SHOULD BE POWERED THROUGH ITS OWN INDIVIDUAL SWITCH OR RELAY CONTACTS TO PREVENT CROSS FEED BETWEEN TWO OR MORE ACTUATORS.

TORQUE AND LIMIT SWITCHES OPERATION

SWITCH	CLOSE ←	INTERMEDIATE	→ OPEN
CLS 1-2			
CLS 1-3			
OLS 1-2			
OLS 1-3			
ACLS1-2			
ACLS1-3			
AOLS1-2			
AOLS1-3			



	 www.pikevalves.com	DRAWN	DESIGN	CHECKED	APPROVER
		C.J. CHU	C.J. CHU		
	PART NAME	ISSU. DEPT.	DATE	SIZE	PROGRAM
	DC WIRING DIAGRAM	ITCDR	2004.05.03	A4	AUTO CAD
PE-0070	OPTION NAME	DWG NO			
PE-0040		PE-W-OC-DC-LS_0070			
APP'L,FILE					