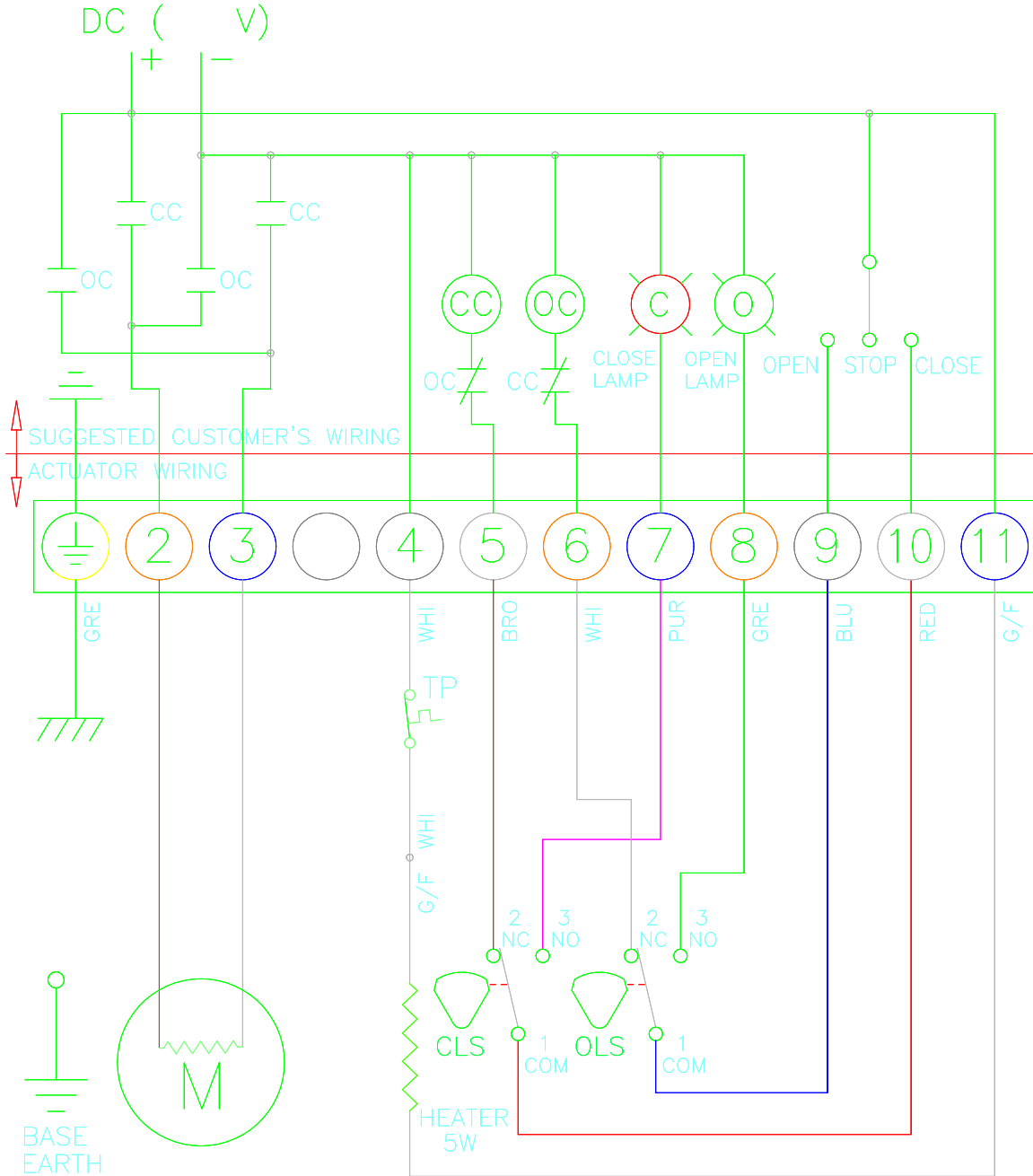



CLS : CLOSE LIMIT SWITCH (250VAC 10A)
 OLS : OPEN LIMIT SWITCH (250VAC 10A)
 CC : CLOSE MAGNETIC COIL
 OC : OPEN MAGNETIC COIL
 TP : THERMAL PROTECTOR (250VAC 15A OPTION)

*EACH ACTUATOR SHOULD BE POWERED THROUGH ITS OWN INDIVIDUAL SWITCH OR RELAY CONTACTS TO PREVENT CROSS FEED BETWEEN TWO OR MORE ACTUATORS.

TORQUE AND LIMIT SWITCHES OPERATION

SWITCH	CLOSE ←	INTERMEDIATE	→ OPEN
CLS 1-2			
CLS 1-3			
OLS 1-2			
OLS 1-3			



	 www.pikevalves.com	DRAWN	DESIGN	CHECKED	APPROVER
		C.J.	C.J.		
	PART NAME	ISSU. DEPT.	DATE	SIZE	PROGRAM
	DC WIRING DIAGRAM	ITCDR	2004.04.12	A4	AUTO CAD
PE-0070	OPTION NAME	DWG NO			
PE-0040		STANDARD	PE-W-OC-DC_0040		
APP'L,FILE					